

Threading: standard to ISO 262/ISO 965-2

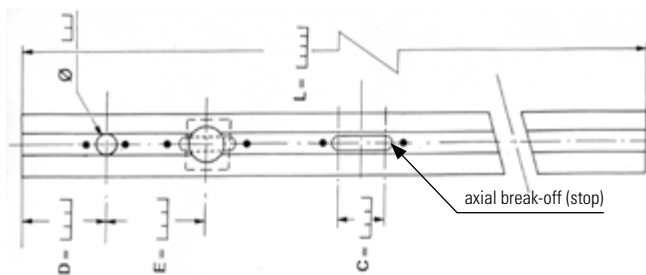
Characteristic and performance tests: ISO 2320

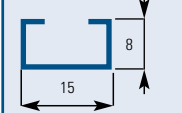

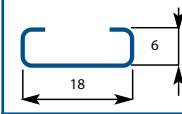

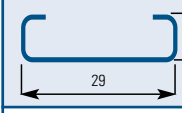

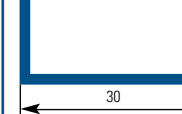

Material: light alloy

Surface treatment: all treatments

(Standards to ROHS requirements)

Field of application: contact us



 <p>Ref. 101000 Material: 6060 (AGS) T5</p>	<p>M3 to M5 M3 to M5 M3 to M5 M3 to M6</p> 
 <p>Ref. 403010 Material: 1050A (A5)</p>	<p>M3 to M8 M3 to M8 M3 to M8 M3 to M8</p> 
 <p>Ref. 403048 Material: 1050A (A5)</p>	<p>M6 to M10 M6 to M10 M6 to M10 M6 to M12</p> 
 <p>Ref. 501000 Material: 6060 (AGS) T5</p>	<p>M6 to M10 M6 to M10 M6 to M10 M6 to M12</p> 



Ease of use:

- From 25 mm to 6 meters long
- Unlimited quantity of nuts and/or screws can be positioned within the channel
- Large range of diameter for nuts and/or screws
- Range of type of nuts and/or screws (possible combination)
- Equidistance between products
- Internal technical setup (oval holes, lights, spring mounts, prepunched rivet holes)
- Channels may be manufactured straight, bent and/or curved.

For special applications and inserts, please do not hesitate to **contact us**